



تهران، خیابان شریعتی، سه راه طالقانی، خیابان خواجه نصیر غربی
نرسیده به میدان سپاه، شماره ۱۶۹ | کد پستی < ۱۶۱۳۹۱۶۱۱۸
تلفن < ۷۷ ۵۲ ۳۲ ۷۴ - ۷۷ ۵۲ ۳۱ ۱۴ | فکس < ۷۷ ۵۲ ۳۲ ۷۴

No.169, Khajehnasir st, Taleghani crossroad
Shariatist, Tehran, Iran | Postal code: 1613916118
Tel > (+98) 21 77 52 25 24 - (+98) 21 77 52 31 14
Fax > (+98) 77 52 32 74 | www.agreentech.ir

Instagram > [agreentech](https://www.instagram.com/agreentech)
Telegram > [sohaagreentechco](https://www.telegram.com/sohaagreentechco)

Milk Powder
Livestock



Mah Milk



Mah Milk

Milk replacement



The product is a special composition based on milk and other required nutrients for calves from birth till weaning. The usage of high-quality raw material and proper formulations are two of the most significant features of Mah Milk replacement. Due to the application of high-tech homogenizers during the production process and reduction in the size of fat molecules, Mah Milk has a very high solubility in water. Another significant point in the production of Mah Milk is the constant examination of raw materials and the final product.

Protein

The protein content of Mah Milk completely originates from milk (Skimmed and whey) that has high digestibility for young calves.

Fat

Fat digestibility in young calves depends on the length of fatty acids and the ratio of saturated to unsaturated fatty acids. The utilized fat in Mah Milk is a mixture of vegetable oil with short- and medium-chain fatty acids that are highly digestible.

Minerals

The minerals in the composition of Mah milk are in the chelated form that has better absorbability.

Vitamin

Vitamin D, A, E, and the family of Vitamin B are added to Mah Milk for better efficiency.

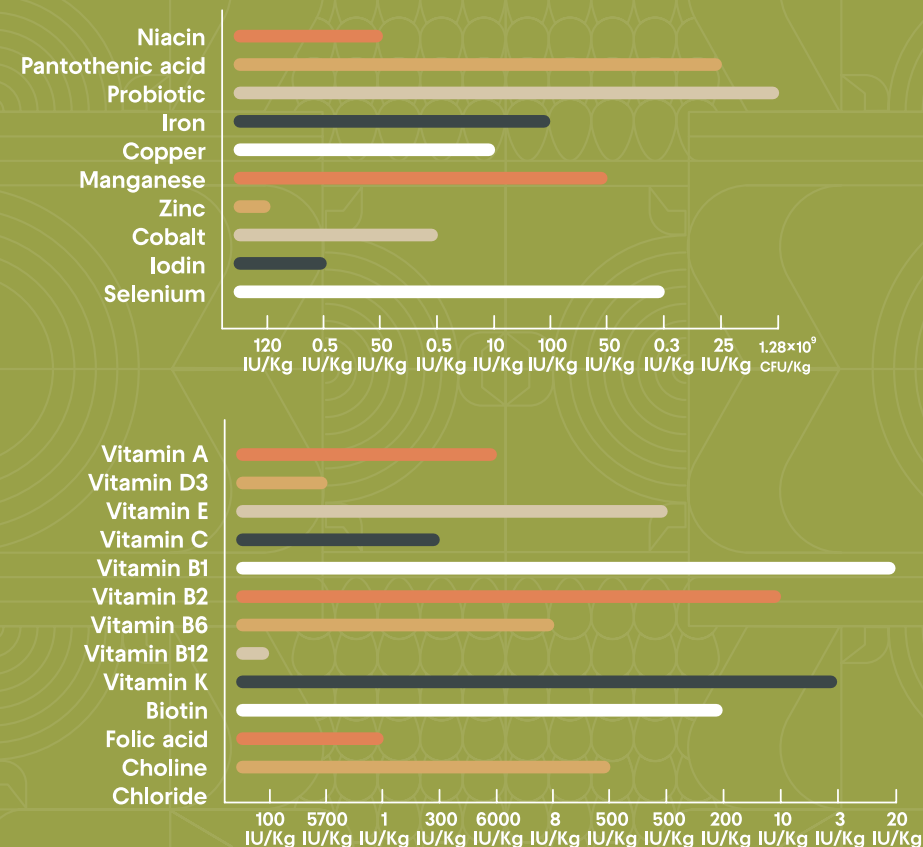
Mah Milk special features

- > Made out of high-quality raw material
- > high solubility
- > Milk-derivate proteins
- > Low fiber (0.1%)
- > Vitamins, essential amino acids and, mineral content higher than milk
- > containing Probiotics, Prebiotics, and growth stimulus
- > Preventing some diseases such as Johne's disease, and IBR
- > The price is lower than breast milk

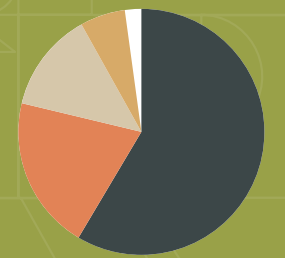
Consumption procedure

- > Mah Milk can be fed just five days after birth.
- > Mix Mah Milk in a 1 to 7 ratio (based on the opinion of your diet specialist) in water.
- > Offer water to the calves on an ad libitum basis.
- > Cut Mah Milk when dry matter intake reaches approximately 1-1.5 Kg.

Vitamins and trace elements in 1 Kg of Mah Milk (IU/Kg)



Mah Milk Analysis



- Protein 21%
- Fat 18%
- Fiber 0.1%
- Ash 9%
- Moisture 4%

Packing

Three-layer 25 Kg packs

Storage conditions

Keep in a cool and dry place away from direct sunlight.

Shelf life

12 months after production.

Consumption levels of Mah Milk calf milk replacement

Age	Feeding volume on each meal (L)	Milking times	Daily intake
First day	1.3-2	3	Maximum consumption of colostrum
2-4 days	1.5	3	4.5 liters of milk
5-7 days	2	3	6 liters of Mah Milk (750 g Mah Milk replacement)
2-9 weeks	3-4	2	6-8 liters of Mah Milk (750-1000 g Mah Milk replacement)
10-12 weeks	3-4	1	3-4 liters of Mah Milk (375-500 g Mah Milk replacement)

Note: This program could be changed based on diet specialist opinion